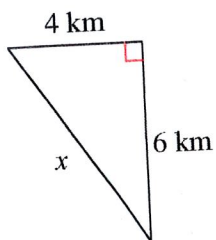


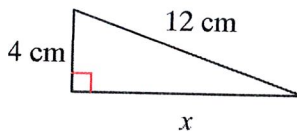
Name _____

Sem 2 TH #2

1. Solve using the pythagorean theorem
*leave your answer as a simplified radical



2. Solve using the Pythagorean theorem
*leave your answer as a simplified radical



Perfect Squares: 1, 4, 9, 16, 25, 36, 49, 64, 81, 100, 121, 144

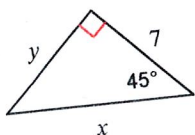
3. Simplify the radical

$$\sqrt{48}$$

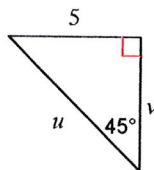
4. Simplify the radical

$$2\sqrt{98}$$

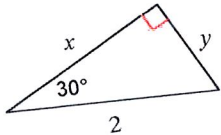
5. $x =$ _____ $y =$ _____



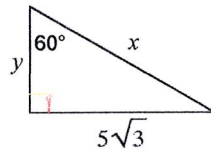
6. $u =$ _____ $v =$ _____



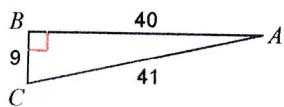
7. $x =$ _____ $y =$ _____



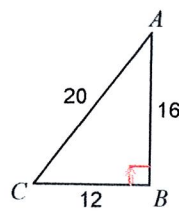
8. $x =$ _____ $y =$ _____



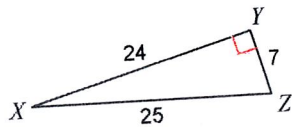
9. Write the ratio for the tan A _____



10. Write the ratio for the Cos C _____



11. Write the ratio for the sin X _____



12. Find the area of the circle
 $A = \pi r^2$

